

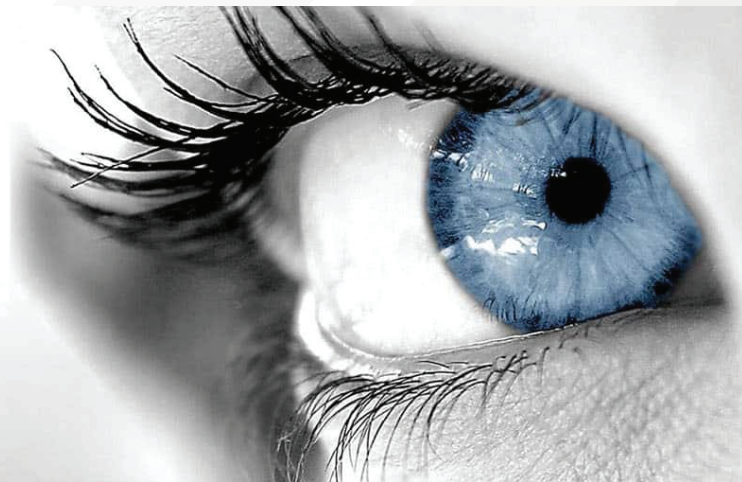
AI - CCTV Series



ARTIFICIAL INTELLIGENT EXTREME RESOLUTION SERIES



CCTV SURVEILLANCE



NEW SERIES CASING UNIVERSAL IP-67 INDOOR / OUTDOOR



Data Securities

Not only live video feed is encrypted and secure, the analytics data is also protected from un-authorized third party access.



Selected Monitoring

Camera feed bring a lot of information at a high speed, but with Angustos new analytic features, business now can gain more invisible information to leverage.

Structural Facial

Angustos new facial recognition logic analyzes and compares live feed with database with split-seconds timing. The coding use unprecedented algorithms that boost up accuracy 50% more compare to other conventional facial recognition.

Artificial Intelligent Chipset

Built-in advanced AI features enhanced security awareness and matrix mathematics specialized for analytics solutions.

Camera SPEC

Image Sensor	1/2.8" SONY
Resolution	3.0 Mega Pixel (1080P)
Effective Pixels	2034*1536P
Compression	H.264/H.265
Smart AI	S. Facial Recognition
	Selective Monitoring Data Encryption P2P dedicate Server
Usable Illumination	0.001Lux
S/N Ratio	≥52dB
Scanning System	Progressive
Video Output	Network

Camera Features

Day/Night	Color/ B&W (IR-CUT)
Image Config	Saturation/Brightness/Contrast /Sharpness, Mirror, 3D NR White Balance, BLC, FLK
Motion Detection	Support
Privacy Masking	3 Rectangular Zone
WDR	DWDR
Recording Mode	NVR/NAS/CMS/Web
Focus Length	2.8mm / Varies Focal
Focus Control	Fixed / Manual / Motor
Infrared LED	Array / μ LEDs
Infrared Distance	25/30/40/60 M