



AMC4 SERIES

AMC4 Series -VIDEO WALL
CONTROLLER with SEAMLESS
QUATRO VISION

VER 1.B

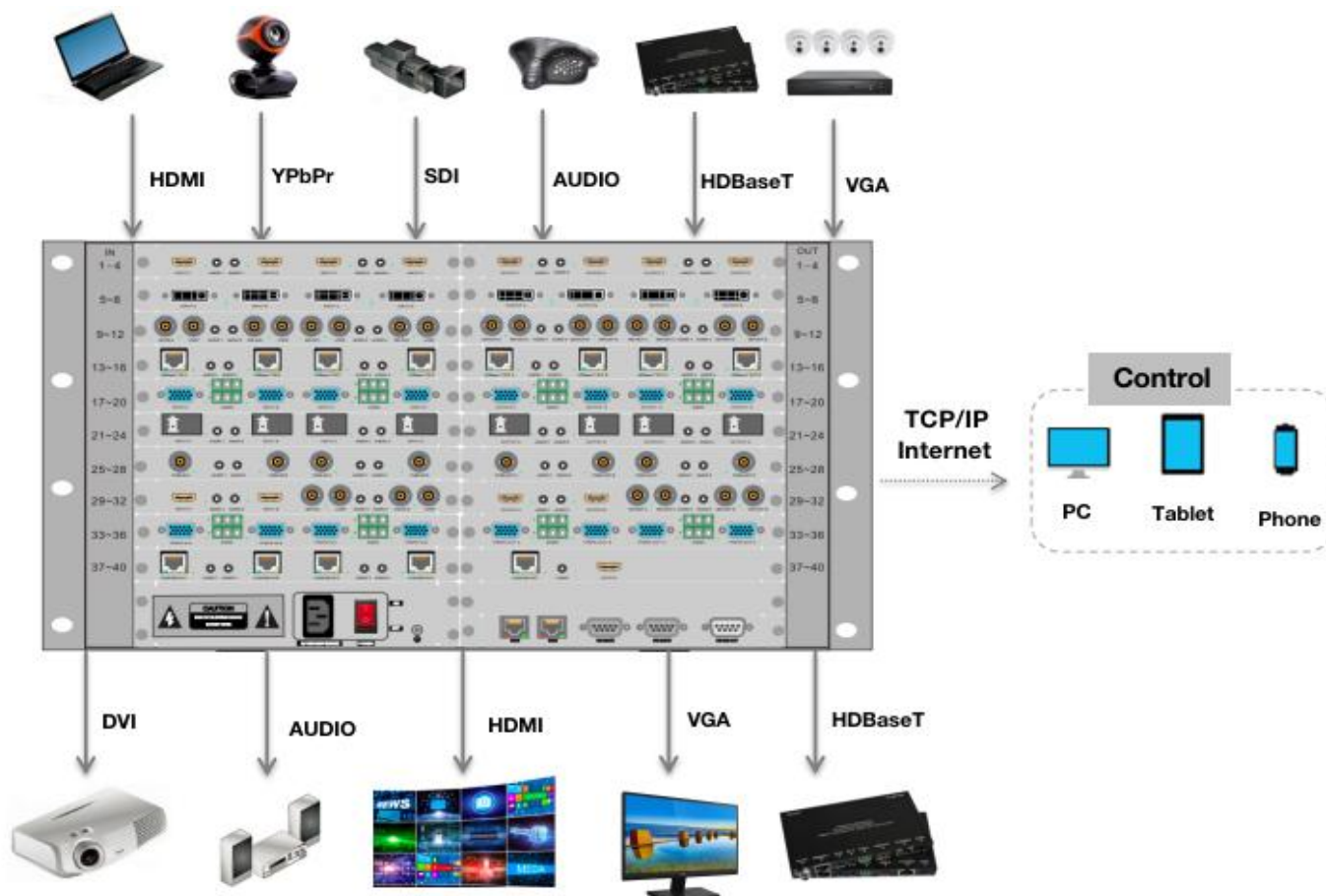
OVERVIEW

AMC4 is a high performance seamless matrix controller unit, including video wall features.

With advanced modular design, it provides flexible configuration options to meet various applications. The modular matrix integrates the functions of video wall display, multi-view and OSD control status.

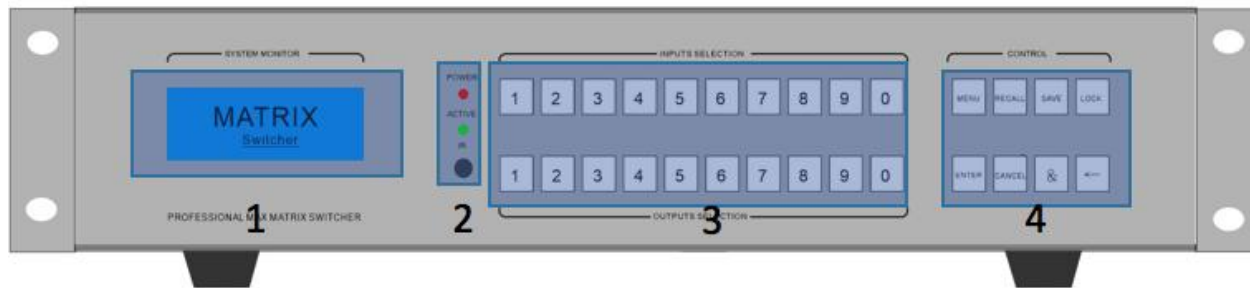
It can be used in the conference room, radio & television, or smart control room projects and command control center.

SYSTEM DIGRAM



Front and Rear Panels

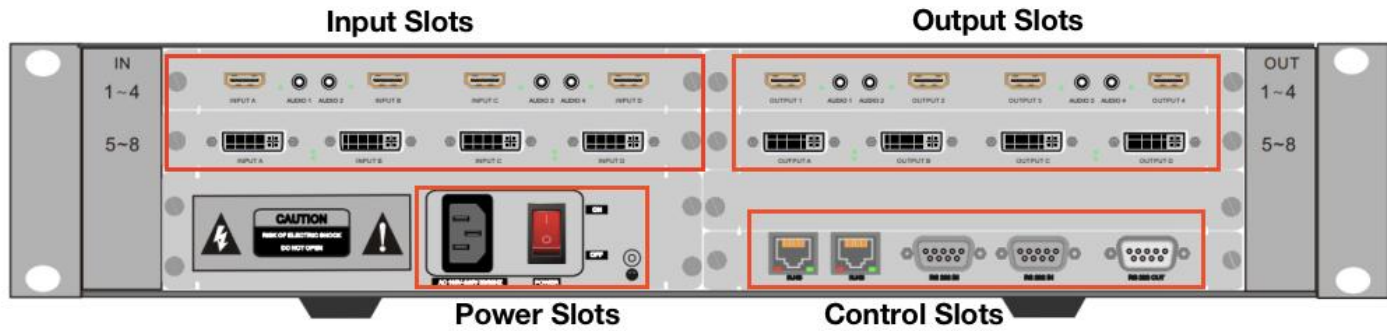
Front Panel



2U Chassis front panel

1. LCD display shows operation status.
2. Indicators of device working status
 - Power:** When the light is on, it means the device is powered on. When the light is off, the device is powered off.
 - Run:** The Run indicator flash indicating the device is working normally.
 - IR:** The device supports infrared remote control.
3. Number push buttons for inputs and outputs switching
 - The first row number push buttons for input signals selection
 - The second row number push buttons for output signal selection
4. Function push buttons for system management
 - Menu:** Menu function selection. The user can the set baud rate, buzzer, IP address and other settings with the coordination of the menu and 1st row numbers button.
 - Recall:** Recall of the saved scene
 - Save:** Save current scene
 - Lock:** Lock or unlock operation. Long-pressed 5 seconds to lock and the button lights will be on. Long-pressed 5 seconds again to unlock and the button lights will be off.
 - Enter:** Confirm execution button, to work with other function buttons.
 - Cancel:** Cancel the previous operation and return to main menu.
 - &:** Output multiple-selection coordination button. For example, switching input 1 to output 3, 4, 8, press the number 1 button in the first row and then the number 3 + & + 4 + & + 8 + Enter in the second row.
 - ←:** When switching multiple outputs at the same time, the user can cancel the wrong output selection in the previous step and re-select the correct output.

Real Panel



2U Chassis front panel for example

Control Software Operation

Double click the file  to run the software.



User name: **admin**

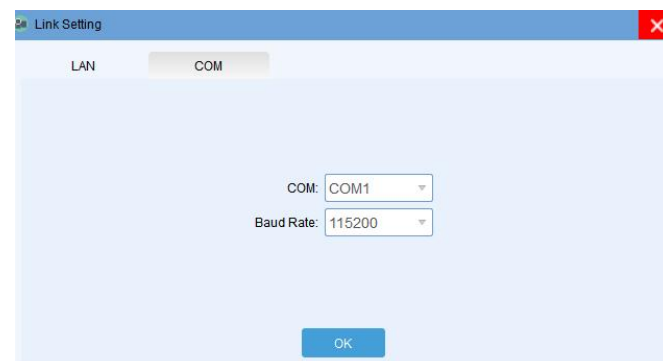
Password: **admin**

Admin privileges can control all software functions and can establish different user mode.

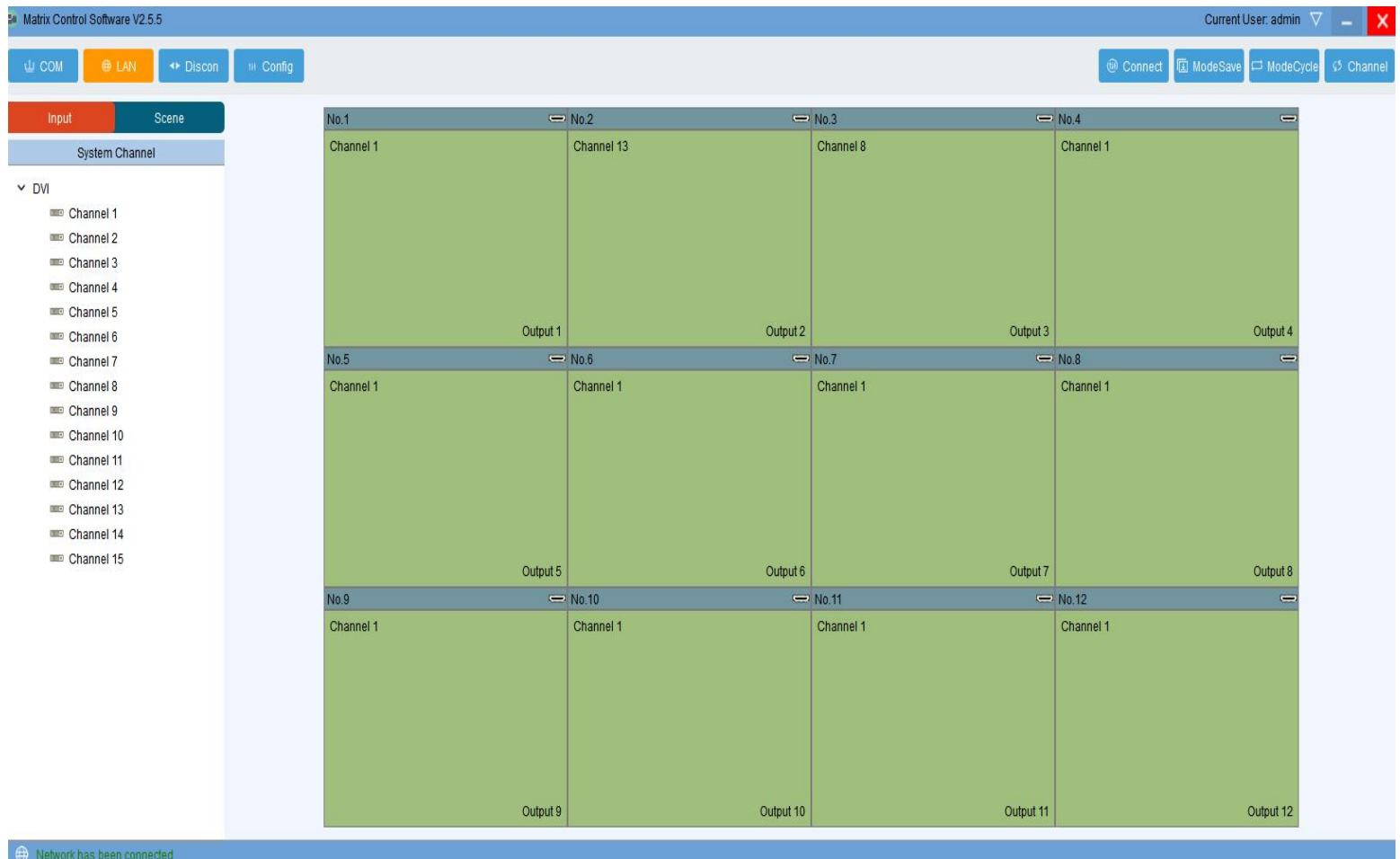


The setting menu provides access to the connection as below.

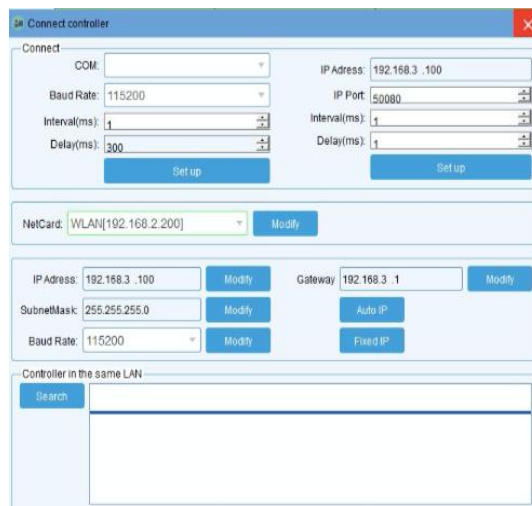
Connection



As shown above, the user can choose LAN or COM connection to enter the software main interface. Pls pay attention to the COM port number selection or the network card selection of the control computer. Once selected the control method, clicking **OK** menu button and then **Connect** menu to enter the main interface as shown below.



- COM:** Selects serial port connection to synchronize device information
- LAN:** Selects network connection to synchronize device information
- Disconnect:** Disconnect from the device
- Connect:** Set COM port, IP address etc..



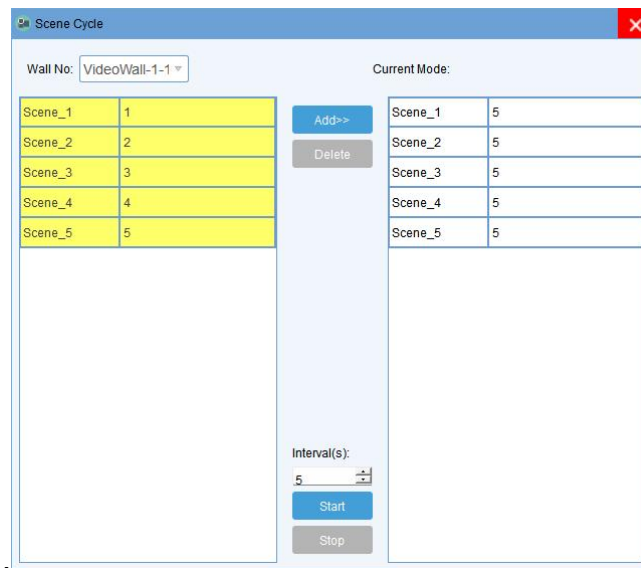
Mode save: Save different display scene.



Scene Save dialog box with the following fields and buttons:

- Index:
- Name:
- Buttons: Confirm, Cancel

Mode cycle: Recall saved scene modes in a loop.



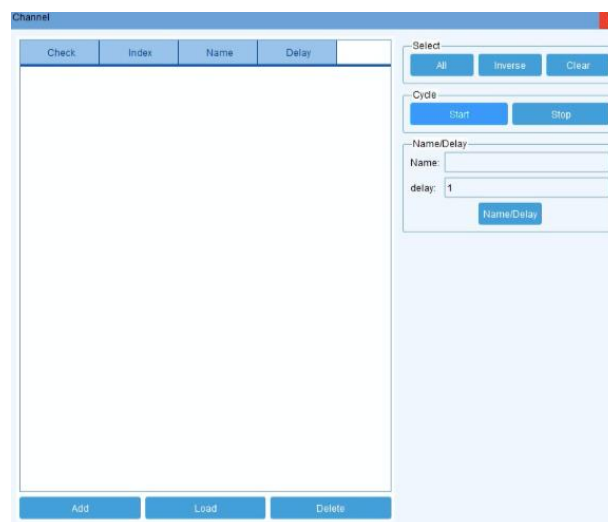
Scene Cycle dialog box with the following components:

- Wall No:
- Current Mode:
- Left Table:

Scene_1	1
Scene_2	2
Scene_3	3
Scene_4	4
Scene_5	5
- Buttons: Add>>, Delete
- Right Table:

Scene_1	5
Scene_2	5
Scene_3	5
Scene_4	5
Scene_5	5
- Interval(s):
- Buttons: Start, Stop

Channel: Recall input and output channel cycle switching.



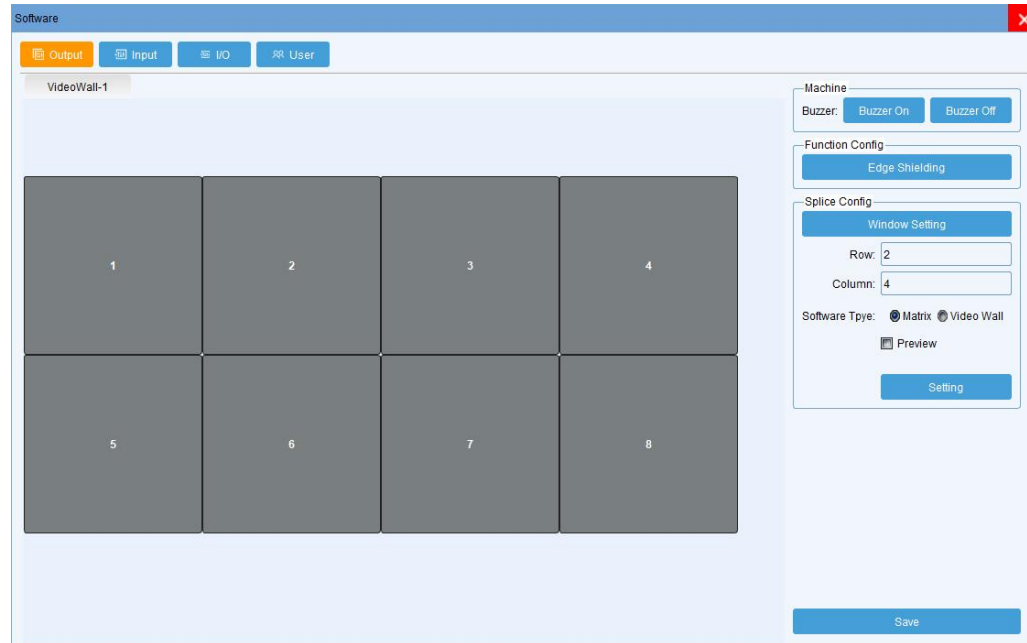
Channel dialog box with the following components:

- Table with columns: Check, Index, Name, Delay
- Select buttons: All, Inverse, Clear
- Cycle buttons: Start, Stop
- Name/Delay section:
 - Name:
 - delay:
 - Button: Name/Delay
- Bottom buttons: Add, Load, Delete

Configuration

This settings are done before it leaves the factory. Non-professionals are strictly prohibited to set it.

Output setting

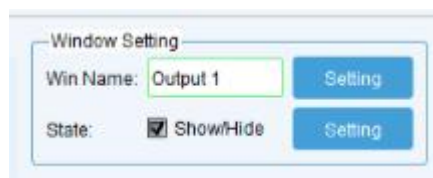


Buzzer: Choose on or off. Buzzer indicates the sound of software operation or key operation.

Edge Shielding: Set the edge shielding in horizontal and vertical.



Window Setting: This function can be used to modify the output port name.

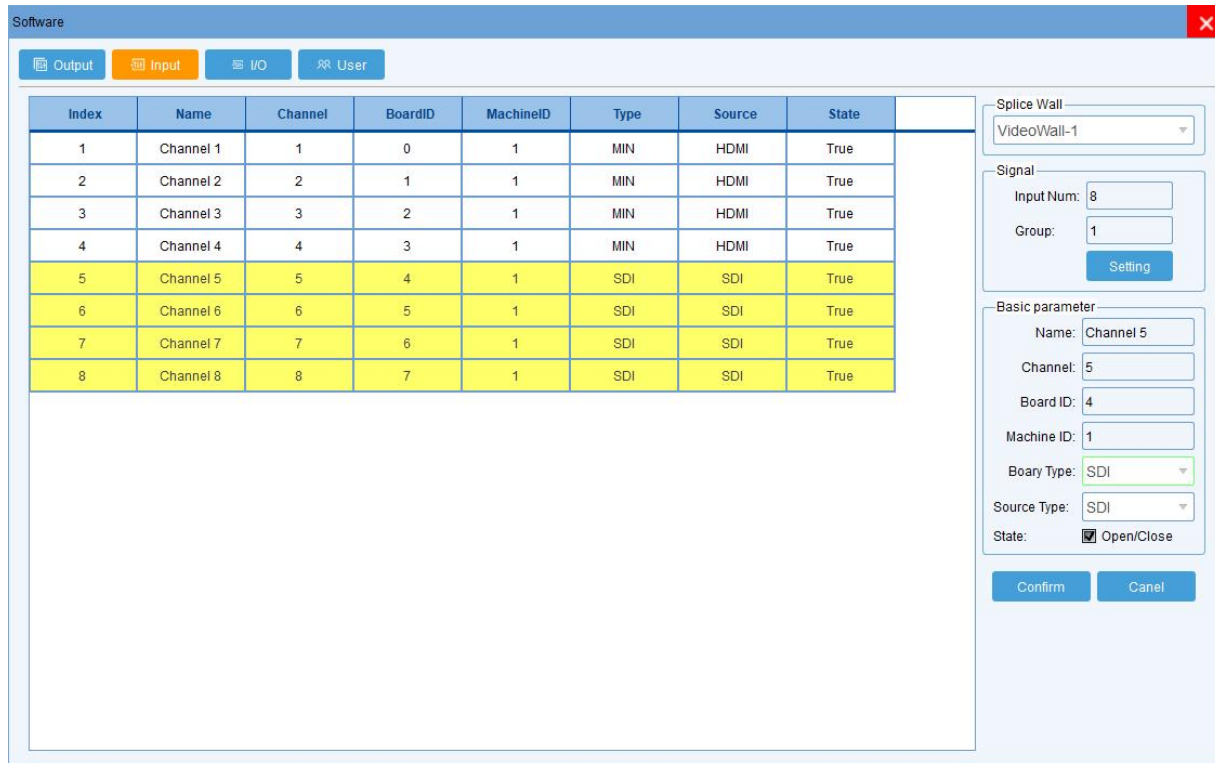


Output configuration: The output ports number can be increased or decreased by modifying the rows and columns of the video wall.

Software type: Choose **Matrix**

Input configuration

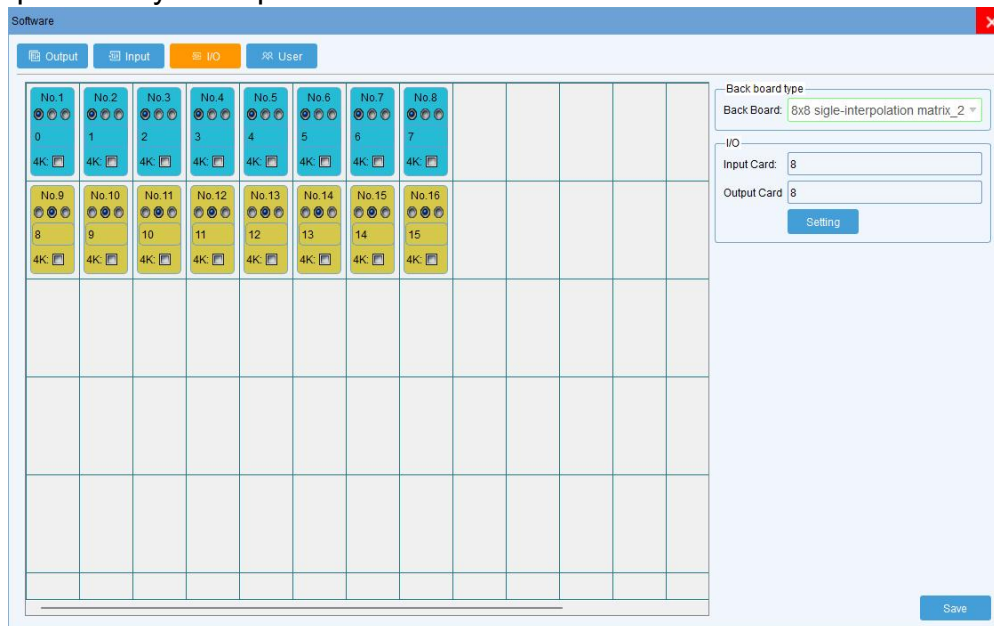
Set the input numbers and card specification as below.



Index	Name	Channel	BoardID	MachineID	Type	Source	State
1	Channel 1	1	0	1	MIN	HDMI	True
2	Channel 2	2	1	1	MIN	HDMI	True
3	Channel 3	3	2	1	MIN	HDMI	True
4	Channel 4	4	3	1	MIN	HDMI	True
5	Channel 5	5	4	1	SDI	SDI	True
6	Channel 6	6	5	1	SDI	SDI	True
7	Channel 7	7	6	1	SDI	SDI	True
8	Channel 8	8	7	1	SDI	SDI	True

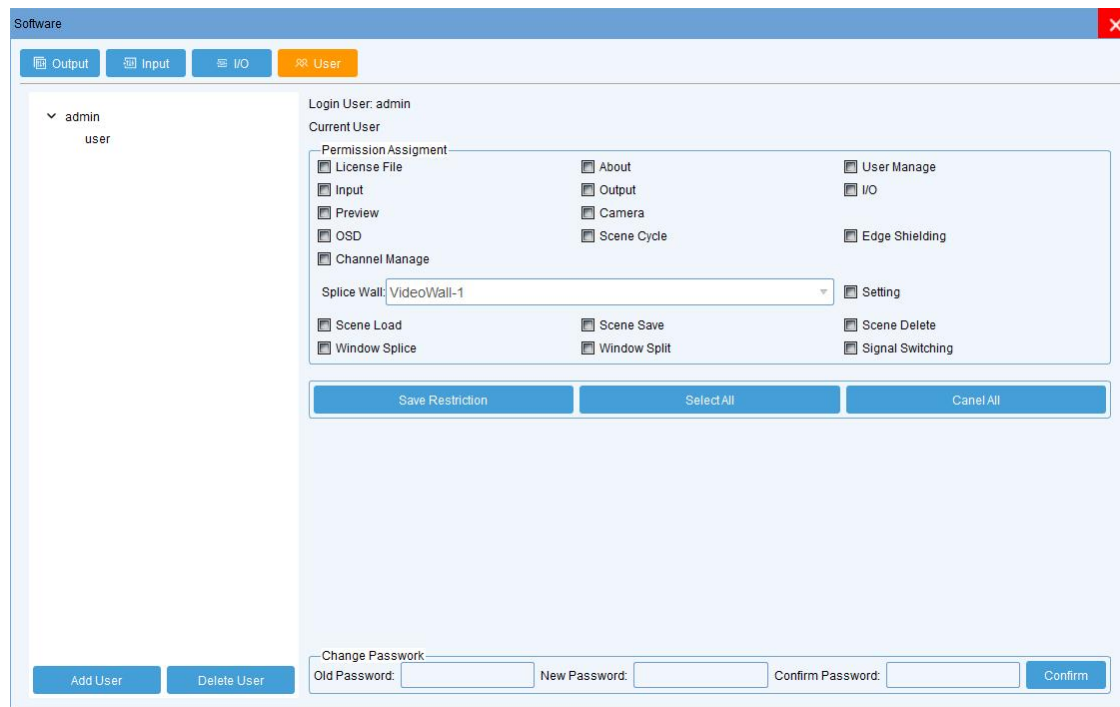
I/O configuration

Used by administrators or engineers to configure main board type and input&output ports. Please not to be operated by non-specialists.



User management

The administrator can add different user login names according to the actual situation and give them different operation permissions for hierarchical management.



Input setting

All input sources are put in the left side of the software interface. Right-click the corresponding input source to pop up the following interface:



One To all: One-click to switch the current input source to all outputs

OSD Mark: Text over the input source. The text color and position are adjustable.

HDMI audio: Set current HDMI board's audio as embedding audio by dial switch.

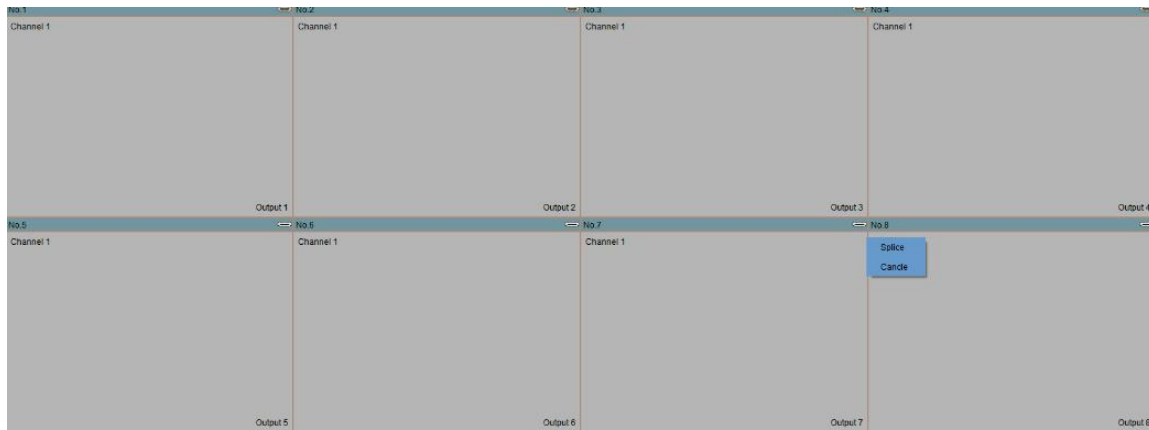
3.5mm audio: Set current HDMI board's audio as external 3.5mm by dial switch



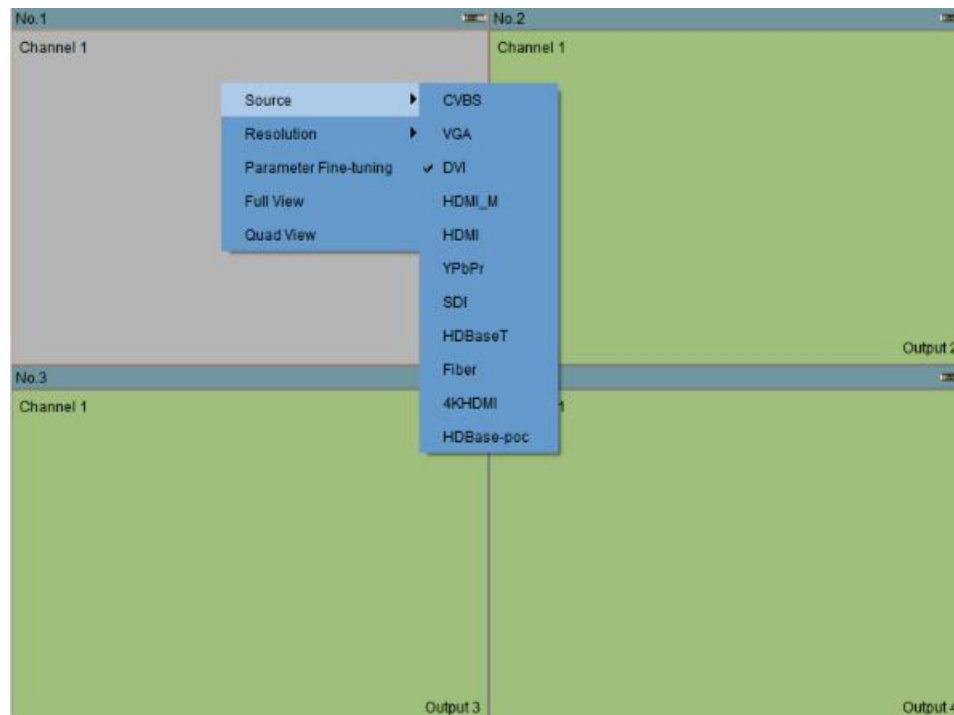
Output port setting

Splice: Select some adjacent screens and right-click the **Splice** menu for video wall display.

Cancel: Select a video wall display area and right-click the menu to back to single display.

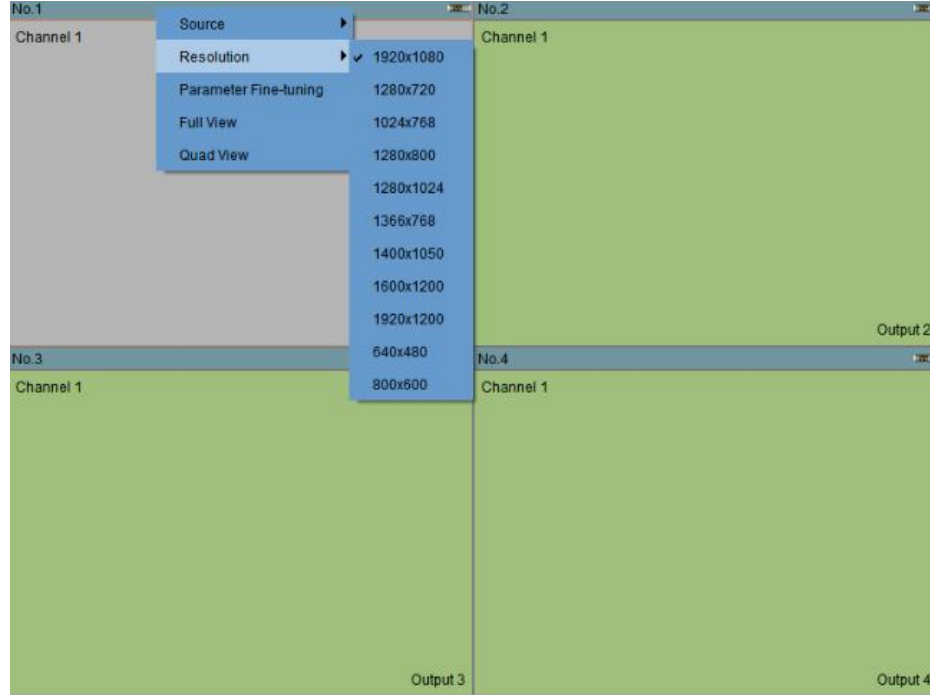


Source: Set current input signal type.



Resolution

Set current input signal resolution



Parameter Fine-tuning

Fine-tuning for brightness, contract and saturation etc..



Full View

Set the display in 1 full image mode.

Quad View

Set the display in 4 quad-view mode.