

High-End

Video Wall Controller



ACV2 FPGA VIDEOWALL CONTROLLER



Hardware Based Design

High performance video processing equipment with hardware architecture design.

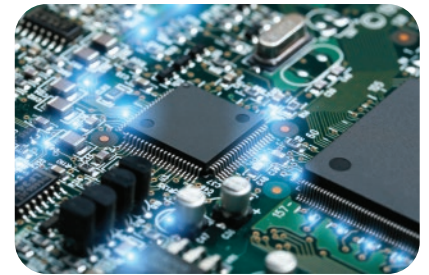
- ★ No more computer high-end specification.
- ★ No more high-end Graphic Processing Unit (GPU Card).
- ★ No more licenses.
- ★ No more blue-screen OS crash.
- ★ No more viruses and black screen.
- ★ No more ransomwares, lost data.



FPGA Dedicated Chipset

Dedicated Field Programmable Gate Array (FPGA - Tritium™ 2ndgen - 2280 Gbps) chipset is a combination of processing unit that dedicated in video signal. This eliminated the limitation of a CPU or a GPU from conventional Software or PC controller. The unit supports 24/7 working time with over 60,000 hours MTBF.

Without the use of PCI - Express card, the unit can work flawlessly when adding or editing the total layout of the videowall set up. As each of the FPGA chip is working independently, user can replace or add new input / output card without turning off the whole chassis.



Features

● High-end 2 up to *4 Layers MPiP™ - Cross Screen

Support 2 Layers MPiP™, up to *4 Layers-Matrix Picture in Picture (MPiP™) in each screen

● Easy control with Drag & Drop

Customize complex layout with simple Click - Drag - Drop

● High-end Video Wall Control

Support Overlap, Roaming, Stretching, Zoom in / out.

● Front Panel Touch Screen

Control scene mode, save / recall profile (up to 32), IP setting with just a touch

● IP Camera Direct Stream (iDirect Stream™)

IP input Card can support streaming video feed direct from IP CCTV Cameras.

● Background Image - Scrolling Text - Scheduling

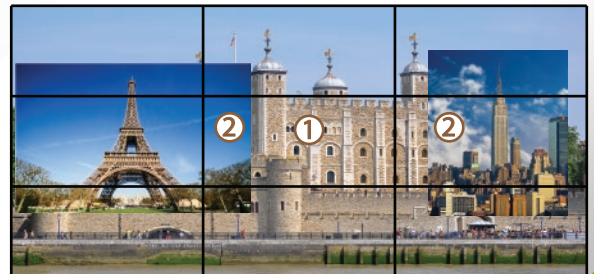
Support Static Background Image and Scrolling Text for Bank and Stock house Video Wall
Support scene mode Scheduling - Cycle for advertising - digital signage Video Wall

Module design with Hot Swap

Multiple form of connections for client to custom fit their system.

Client can now combine HDMI - DVI in one total solution, maximizing system integration for IT rack (19").

Reduce the total cost of investment in both pre & post phase of expansion. Chassis also support control multiple videowalls, further simplify the complexity of connections and management.



VIDEO WALL CONTROLLER - ACV2 04 x 04 Cross Screens Video Wall

FEATURES

- Pure Hardware Structure - FPGA
- All In One - Hot swap - Hybrid I/O
- Seamless Switching - Auto EDID - 5ms
- Bezel Compensation with Scaler
- Multiple users / rights management
- Character Superimposition, Scrolling Text (opt)
- Multiple video wall management - up to 4
- Signal preview - WEB GUI control (opt)
- Control Room Mode with over IP KVM system extension
- High-end 2 Layer up to *4 Layers MPiP™



SPECIFICATION

| | |
|---|--|
| Start up time | 10s |
| Switching time | 5ms |
| Chassis size (mm) | 1.5U |
| Max Data Rate | 15.2 Gbps (3.8Gbps per Lane) |
| Input Interface Port | 4 |
| Output Interface Port | 4 |
| Interface Support (Input / Output) | HDMI |
| Total number of Input / Output channel | 256 channel 4K / 512 channel 1080p with Smart Management Grouping |

| | |
|---|--|
| Control | Over IP / RS-232 |
| HDMI version | 1.3 - Support 3D , Deep Color |
| HDCP version | 1.4 / 2.0 / 2.2 |
| Distant support | 18-300m with AOC cables / Extenders |
| Resolution Input / Output (8 Bit RGBA color) | 1280 x 720 @ 120Hz 1920 x 1080 @ 60Hz 1920 x 1200 @ 60Hz |

| | |
|--------------------|---|
| Processing chipset | FPGA - Tritium™ 2 nd gen |
| Screen layer | 2 Layers MPiP™ - up to 4 (OPT) |
| Hot-swap EDID | Support Auto EDID |
| Power supply | Main - Support Redundant (OPT) |
| Interface link | Analog - Digital - IP Stream |
| Output restriction | Support all type of display (Screens / Projectors / DLP / LED) |
| Mobile Control | Support iOS & Android |
| One click ON/OFF | Support |

| | |
|---------------------------------|------------------------------------|
| Pixel Clock | 225 Mhz |
| HDMI impendence | 100 Ω - ESD Protection |
| Power Rating | 100-240 VAC; 50/60Hz |
| Power Consumption | 100 - 450 W |
| Fan Airflow | 55 - 65 cfm (12VDC) |
| Operating Temperature | -20 ~ 70°C |
| Storage Temperature | 10 ~ 90°C |
| Storage / Operating Humidity | 5~95% RH (without condensation) |

*4 Layers MPiP™ configuration will allocate double output video bandwidth on each port, the total number of output operational ports will be reduced in half.

VIDEO WALL CONTROLLER - ACV2

04 x 04 Cross Screens Video Wall

