

PRO - AV

HI-END
SERIES



HIGH-END DIGITAL SIGNAGE SYSTEM



Why choose ANGUSTOS Pro-AV ?

We can provide you the best solution that suits your TVs, interactive screens, meeting room high-end projector, digital signage and videowall system. We do not just simply sell the equipments but also a smart solution that is just as well designed as it is functional. Solutions that guarantee and define our brand:

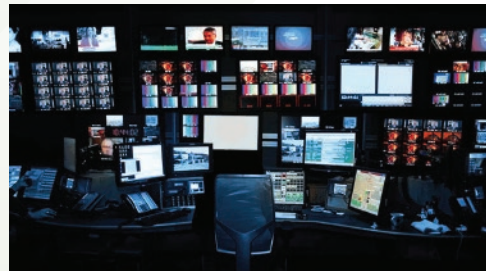
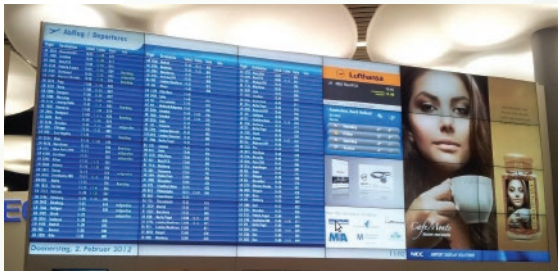
- Ease-of-use
- Design
- Innovation
- Reliability
- Ease-of-installation.

To help you find the exact solution you need, Angustos has an extensive product range that is possible to compose a solution for nearly every Pro AV application. Our highly skill solution teams are happy to help you to quickly find the best solution for your installation, saving you the time and effort and hassle for complex system.



ANGUSTOS PRO AV APPLICATIONS

- Media - Telecom - Broadcast
- Education - Training
- Manufacturing - Quality Control
- Retail - Advertising
- Meeting Room - Conference
- Healthcare visual system
- Entertainment
- Government - Control Room



HDMI MATRIX SWITCH Seamless 4 x 4 - Video Wall Controller Model : KVSMW0404K3

FEATURES

- Compliant HDCP 1.4/2.2 HDMI 2.0b
- Seamless video switching
- Support 3840 x 2160 @60Hz 4:4:4
- Support 4096 x 2160 @60Hz 4:4:4
- Support upscale or downscale resolution
- Support LPCM, DD+, DTS, Dolby TrueHD, DTS HD-master pass-through audio
- Advanced EDID management
- Support Web GUI Control
Front panel Button, IR, RS-232 and TCP/IP



Package content

- 1 x 18Gbps 4x4 Seamless Matrix
- 1 x Matrix IR Remote
- 1 x Phoenix Connector (male)
- 1 x 20-60KHz IR Wideband Receiver Cable
- 2 x Mounting Ears
- 1 x 12V/2.5A Locking Power Adapter
- 1 x User Manual

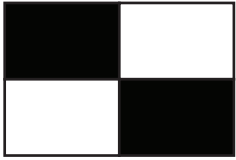


SPECIFICATION

Operating Temperature	-0° to 60°C
Operating Humidity	0 to 90% RH
Video Input Connectors	4 x HDMI
Video Output Connectors	4 x HDMI
Data Rate / Pixel Clock	18 Gbps / 600MHz
Audio Format Support	DTS-HD Master Audio Dolby True HD, LPCM, DTS, DTS-EX, DTS-96/24
Control	1 x RS-232 (Phoenix) 1 x RJ-45 (web GUI) 1 x IR EXT (3.5mm)

Standard	HDMI 2.0b / HDCP 2.2
Input / Output Resolution	3840x2160 @ 60Hz 4096 x 2160 @ 60Hz
Color Space	RGB, YCbCr 4:4:4 YUV 4:2:0
Color Depth	8 / 10 / 12 bit
Power Supply	AC 100 - 240V 50/60Hz DC 12V/2.5A
IR Level	12V p-p / 38 KHz
Power Consumption	19.6 W (max)
Dimension (L x W x H)	270 x 166 x 30 mm

HDMI MATRIX SWITCH Seamless 4 x 4 - Video Wall Controller Model : KVSMW0404K3



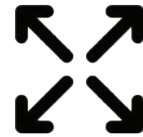
MATRIX SWITCH
*WITH SEAMLESS



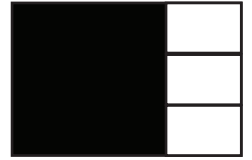
WEB GUI
CONTROL



REMOTE
CONTROL



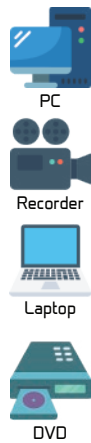
BUILT-IN
SCALER



MULTI-VIEW
SUPPORT

CONNECTION DIAGRAM

INPUT

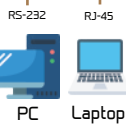


HDMI
HDMI
HDMI
HDMI



HDMI
HDMI
HDMI
HDMI

CONTROL



RS-232

RJ-45



OUTPUT

Matrix Switch



VIDEO WALL MODE SUPPORTED



2x2



1x2x1



2x1



1x2-2



1x3



1x4



4x1



3x1



2x2 Matrix