

PRO - AV

NEW SOHO H-SERIES



HIGH-END DIGITAL SIGNAGE SYSTEM



Why choose ANGUSTOS Pro-AV ?

We can provide you the best solution that suits your TVs, interactive screens, meeting room high-end projector, digital signage and videowall system. We do not just simply sell the equipments but also a smart solution that is just as well designed as it is functional. Solutions that guarantee and define our brand:

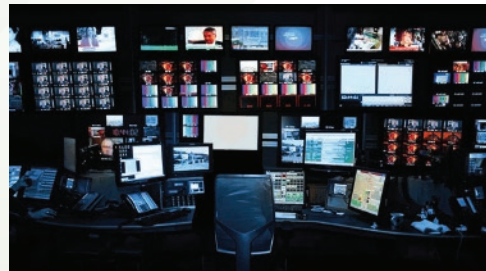
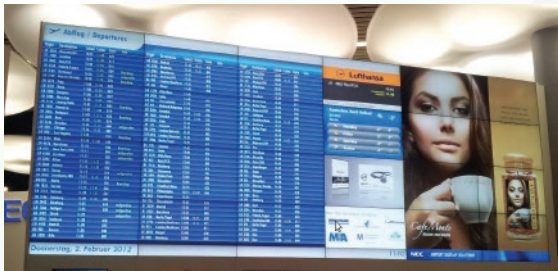
- Ease-of-use
- Design
- Innovation
- Reliability
- Ease-of-installation.

To help you find the exact solution you need, Angustos has an extensive product range that is possible to compose a solution for nearly every Pro AV application. Our highly skill solution teams are happy to help you to quickly find the best solution for your installation, saving you the time and effort and hassle for complex system.



ANGUSTOS PRO AV APPLICATIONS

- Media - Telecom - Broadcast
- Education - Training
- Manufacturing - Quality Control
- Retail - Advertising
- Meeting Room - Conference
- Healthcare visual system
- Entertainment
- Government - Control Room



HDMI 4K SPLITTER

Model : KVS102K6P

FEATURES

- HDMI 2.0b, HDCP 2.2 standards.
- Resolution 4K2K@60Hz with 24bit RGB/YCBCR 4:4:4
- VESA format up to QSXGA@60Hz
- Supports LPCM 7.1CH, Dolby TrueHD, and DTS-HD Master Audi
- Built-in equalizer, retiming and driver
- Smart EDID, STD(1080p) mode and TV(copy OUT1) mode
- Compact design for an easy and flexible installation



PACKAGE

HDMI Splitter unit x 1
Power Adapter x 1



SPECIFICATION

Operating Temperature	-32° to 104°C
Operating Humidity	-20 to 90 RH (no condensing)
Video Input Connectors	1 x HDMI
Video Output Connectors	2 x HDMI
Data Rate / Pixel Clock	18 Gbps / 600MHz
Audio Format Support	LPCM 7.1CH, Dolby True HD DTS-HD Master Audio
EDID Control	Auto TV - STD Switch

Transmission Distance	5m with standard HDMI cable / 26AWG
Standard	HDMI 2.0/ HDCP 2.0
Max Resolution	4K2K @ 60Hz
Power Supply/Consumption	5V/1A 2 W (Max)
Dimension (W x D x H)	56 x 100 x 16 (mm)
ESD / Impedance	±4 - 8kV / 100Ω

