

DISPLAY

HI-END
SERIES



HIGH-END INTERACTIVE DISPLAY



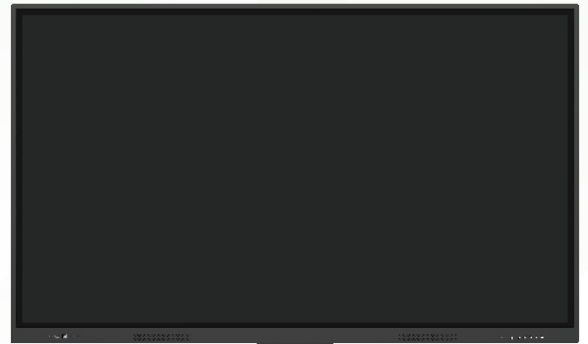
ANGUSTOS Interactive Display

Angustos Interactive displays are designed to work into the growing dynamic possibilities of the modern meeting room and classroom. We seek to help businesses develop and maintain an environment where ideas flow freely.

It allows for extended, seamless teamwork collaboration, stimulating more innovative ideas from students. Pushing up collaboration between people, turning their creativities from abstract to real.

Crystal Gaze™: 4K UHD Interactive display and wide viewing angle, you can comfortably see details displayed at every angle. Eye protection screen design will reduce visual fatigue from pro-longed watch time.

Powerful but easy to use: Built-in speaker, microphone(optional), HD camera (optional), shorten the distance with your audiences in your online classroom and meeting room with impressive Interactive IR-touch technology, smooth touch writing experience, complex object recognition.



ANGUSTOS INTERACTIVE DISPLAY

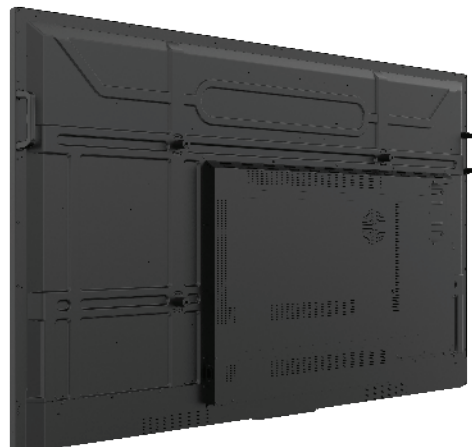
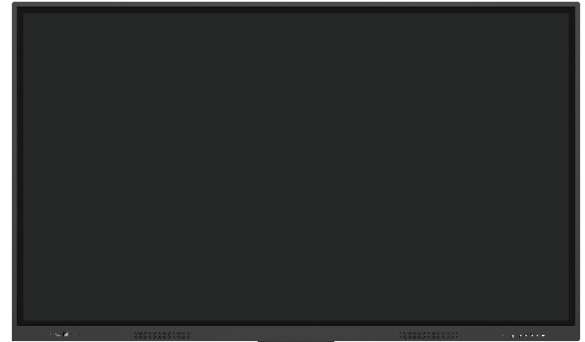
- Media - Telecom - Broadcast
- Education - Training
- Manufacturing - Quality Control
- Retail - Advertising
- Meeting Room - Conference
- Healthcare visual system
- Entertainment
- Government - Control Room



86 Inch DLED Interactive Display Model : AID-86K1

FEATURES

- Android 11.0 smart operating system and unique 4K UI interface.
- 4-core 64-bit high-performance CPU, 4×A53 architecture, max. clock 2.2GHz
- Ultra-narrow frame design, frosted frame material.
- Touch accuracy reaches ± 1 mm
- Touch height 1.0mm, max 40 touch points, high sensitivity.
- Support OPS interface, expandable dual systems,
- USB 3.0 windows interface, USB 2.0 supports dual sharing.
- Multiple security settings.
- 4K UHD writing whiteboard, handwriting with delicated strokes.
- Support apps with high-performance writing single-point & multi-point writing, double-pen writing, unlimited color palettes, inserting pictures, adding pages.
- Zoom in, zoom out, roaming, scanning code to share in LAN. Annotation function is available in all channels.
- Anti-glare and explosion-proof tempered glass, MoHS hardness level 7.
- Built-in WPS, 2.4G/5G dual-band wireless, dual network card with Hot Spot (Optional).
Support multi-channel wireless share presentation with mirroring anti-control, video & music & document sharing.
- The external input signal source automatically connect.
- Crystal Gaze™ image processing engine: image motion compensation, color enhancement processing
- Point-to-point fine display technology.
- Intelligent gesture, five fingers supported.
- Flexible formats supported : MPEG, MPEG-2, MPEG-4, H.264, RMVB, MOV
- Sidebar buttons and gestures for voter, timer, screen capture, child lock, screen recording, photo taking, touch sensing, smart eye protection.



86 Inch DLED Interactive Display Model : AID-86K1

HARDWARE SPECIFICATION

Display Size	86"
Backlight Type	DLED
Panel Type	IPS Ultra HD
Aspect Ratio	16:09
Resolution	3840(RGB)×2160, 4K UHD
Brightness cd/m ² (Typ.)	400
Frame rate	60 Hz
Contrast (Typ.) / (Dynamic)	1200:1 / 4000:1
Viewing Angle	178° H / 178° V
Display area (H×V)(mm)	1895×1065
Touch	IR. Max 40 points. Android 20 points
Color Depth	1.07B (8bit+FRC)
Color Gamut	70%NTSC(typ)
Speaker	2×8Ω16W
Standby Power consumption(W)	<0.5W
Power consumption(W)	≤460W(Without OPS)
Response Time(ms)	8ms (typ)
Pixel Pitch	0.4935mm*0.4935mm
MTBF	30,000 hrs (min.) - 50,000 hrs (Typ)

SYSTEM SPECIFICATION

System Chip	ARM CortexA53*4
System version	Android 11.0
CPU Structure	A53 x 4
CPU clock	2.2 GHz
CPU Core	4 Cores
GPU	Mali G52 MP8
RAM	4GB DDR4 / 8GB (option)
ROM	32GB / 64GB (option)
Touch	Infrared frame. 40 point
Glass	4mm toughened glass
	Anti-glare , 7H hardness
Response speed	≤10ms
Accuracy	90% Center ±1mm
	10% Edge ±3mm
Touch diameter	≥3mm
Input support	Finger - Pen - Stylus
Theoretical clicks	Unlimited
Interface	USB 2.0 Full Speed

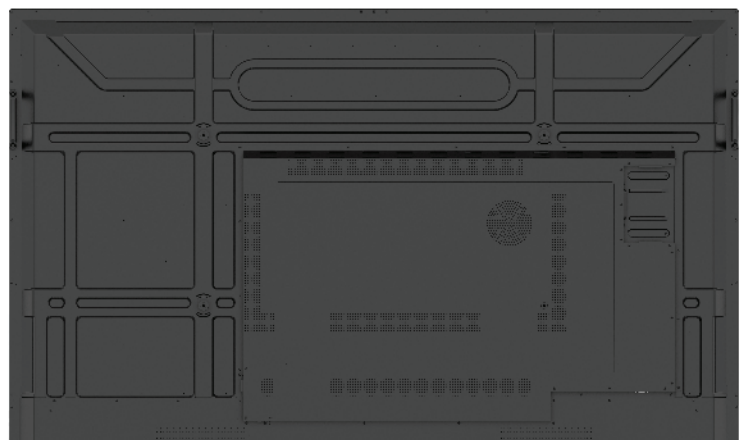
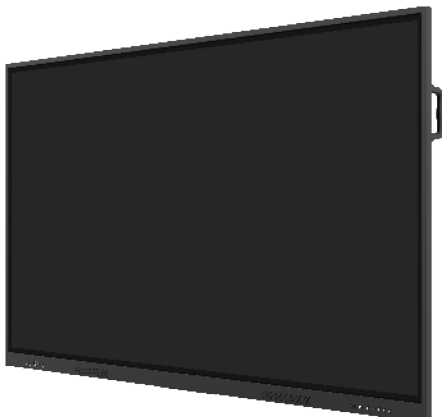
Voltage	4.75 ~ 5.25V
Power Consumption	≤2 W
Network	x2 (RJ45)
VGA IN	x1(DB 15)
HDMI In / Out	In x 2 / Out x 1
DP IN	x1 (DP 1.2a)
Audio In / Out	In x 1 / Out x 1
SPDIF Out	x 2
USB	3.0 x 2 / 2.0 x 1 / x1 type C
Touch USB	x 3(USB3.0, Type-B)
RS-232	DB9 female x 1
OPS(Optional)	x 1 (JAE)
WIFI antenna	2.4 / 5G x 2 2.4G x 1 Bluetooth 2.1+EDR/4.2/5.1
Temp (Work / Store)	0~55°C / -10°C ~ 65°C
Humid (Work / Store)	0-90% RH / 0-90% RH
Power Rate	100 - 240 VAC. 50-60Hz

86 Inch DLED Interactive Display Model : AID-86K1

APPLICATION

Chrome	Support
Google Store	Support
Setting	Support
WPS	Support
Calculator	Support
Whiteboard	Support . 4K
Open File	Support
Save File	Support
Scan Code	Support
Left - Right Menu	Support
Source	Support
Power off	Support
Home	Support
Return	Support
Volume	Support
Annotation	Support
Calendar	Support
Childlock	Support
Optional accessories	
Wireless presentation sharing kit	
Smart Pen	

Energy saving	Support
Screen shot	Support
Screen recording	Support
Timer	Support
Photograph	Support
Backlight	Support
Sound	Support
Smart Eye Protection	Support
USB Lock	Support
Languague	20 languages
Timer switch	Support
Wake by LAN	Support
Hardware self-test	Support
WIFI Antenna	4
Magnetic pen	1
Remote Controller	1
Wallmount	1
OS Support	Windows / Android/ MAC Chrome OS



86 Inch DLED Interactive Display Model : AID-86K1

SPECIFICATION OPS (Option)

CPU	Intel® Alder Lake-P Processor Max. TDP 28W
Chipset	Intel SOC design
BIOS	AMI UEFI BIOS
Graphics card	Intel® Iris® Xe Graphics
Multi displays	3 simultaneous 3 displays
Interface	1 x DP1.4/ 1xHDMI1.4 1 x 80PIN
Memory	8 GB
Ethernet	1 x RJ45
WIFI antenna	2.4 / 5G x 2 2.4G x 1 Bluetooth 2.1+EDR/4.2/5.1
Storage	1 x M.2 2280 for NVMe / SATA SSD
IO Interface	1 x DP1.4, 1 x HDMI1.4 2 x USB 2.0, 2 x USB 3.1 1 x Type-C(USB3.1) 1 x RJ45 1 x Line out & MIC-In 2 x Wi-Fi/BT ANT

OPS Interface	1 x 2.5/5.5 DC IN JACK 1 x HDMI2.0 4K60Hz output 1 x DP1.4 output 2 x USB2.0, 1 x USB3.0 1 x TTL
OS Supports	Windows10/Windows11/Linux
Watchdog	Support
vPro/AMT	Support
TPM	Support
Power input	12~19V DC IN, 2.5/5.5 DC Jack & JAE 80Pin DC IN
Dimension	119(L) x 180(W) x 30(H) mm
Operating Temp.	-5°C -45°C
Operating Humidity	10°C - 90°C non-condensing
Storage Temp.	20 - 70°C
Operating Humidity	5%~95% non-condensing

